

Arrecife

Distance to town:

Around a 20 to 25 minute walk

Shopping:

Head to Calle Real, Arrecife's main shopping street, for everything from local crafts to stylish boutiques

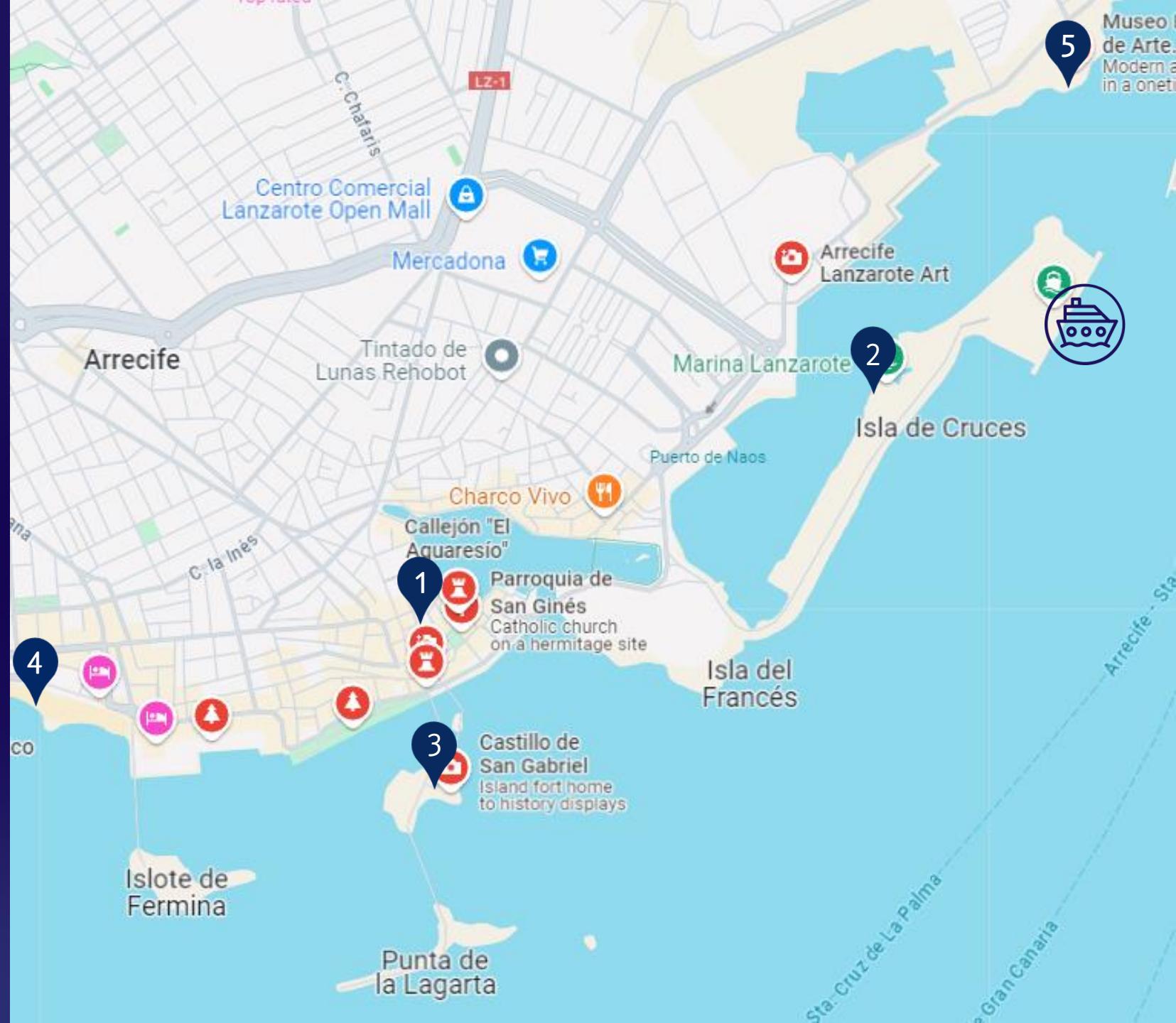


Docking Location

Top Sights:

- 1 Town Centre
- 2 Marina
- 3 San Gabriel Castle
- 4 Beach
- 5 Contemporary Art Museum

Map source: google.com



EXPLORE ASHORE ARRECIFE

USEFUL INFORMATION



CURRENCY
EURO



LANGUAGE
SPANISH



DISTANCE TO TOWN
AROUND A 25 MINUTE WALK

AT A GLANCE

Lanzarote is a great place to explore. This unique and mesmerising moon landscape is a geological wonder. The volcanoes have shaped and coloured the island for centuries. The most recent volcanic eruptions from 1730 – 1736 have covered over a quarter of the island's surface. It is just another chapter in the ongoing process and the geological formation of the island. Therefore Lanzarote is a living laboratory for scientists.

Arrecife is a sleepy, traditional town, which can easily be covered in around an hour or so. The distance to Arrecife town is an approximate 20 to 25 minute walk. The marina is a little closer and has a few shops and restaurants.

Taxis are generally available in the port area.

OUT AND ABOUT

San Ginés Church: This attractive church is built of dark, volcanic stone and is whitewashed, as a gleaming tribute to San Ginés - Arrecife's patron saint.

The International Museum of Contemporary Art: Housed in a fortified 18th century castle, this small museum showcases art pieces of local artists of Lanzarote. Inside there is a restaurant which offers great views overlooking the port. There is a small entrance fee.

Castle of San Gabriel: Originally a wooden fortress, this castle was built in 1573 as a defence for Arrecife, against pirates and attacks from North Africa. It was unfortunately destroyed a few years later, by a fire. Over the years, the castle has undergone major restoration works, and it's now a striking landmark in Arrecife.

BEST BEACHES

There are a number of small beaches in Arrecife. Near the port is Playa de La Arena, which is a small secluded beach. A bit further afield is Playa Reducto, which is a bigger beach, boasting golden sands. You will also find beaches in the popular tourist resorts of Costa Teguise and Puerto Del Carmen.

SHOPPING

Head to Calle Real, Arrecife's main shopping street, for everything from local crafts to stylish boutiques. Discover unique Lanzarote finds, from artisan jewellery to volcanic stone souvenirs. Perfect spot to pick up a piece of the island!

DO IT LIKE THE LOCALS

Taste "Sancocho," Lanzarote's beloved fish stew, made with salted fish, potatoes, and served with a side of "mojo" sauce and gofio. It's a hearty, flavourful dish that's perfect for an authentic island experience.

JUST SO YOU KNOW

As with all tourist destinations, pick-pockets can operate in crowded areas so please be mindful of your possessions. It's illegal to smoke on beaches in the Canary Islands.

For more information on what to do ashore, speak to the Destination Services team on Deck 5