

# La Spezia

## Distance to town:

Around a 10-minute walk

## Shopping:

Head to Via del Prione in the Historical Centre for a variety of shops

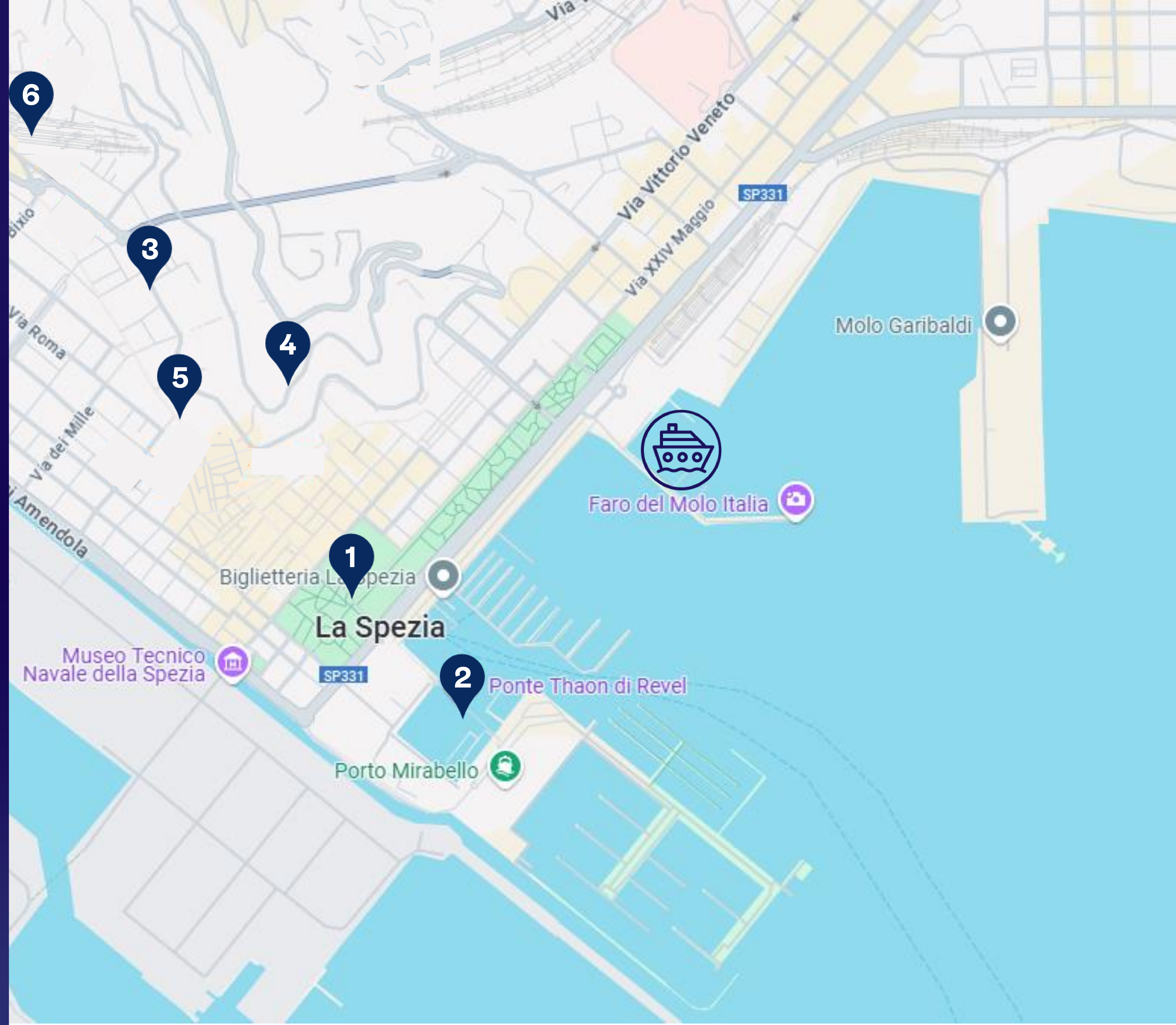


## Docking Location

## Top Sights:

- 1 The Public Gardens
- 2 Tahon di Revel Bridge
- 3 The Cernaia Stairway
- 4 Castello San Giorgio
- 5 Via del Prione
- 6 La Spezia Centrale Station

Map source: google.com





# EXPLORE ASHORE LA SPEZIA

## USEFUL INFORMATION



**CURRENCY**  
EURO



**LANGUAGE**  
ITALIAN



**DISTANCE TO TOWN**  
AROUND A 10 MINUTE WALK

## AT A GLANCE

With its vibrant mix of pink, yellow, and amber houses, prepare to be enchanted by La Spezia's charm. A perfect blend of history, culture, and natural beauty, the city is an ideal destination to explore on its own or as a starting point for discovering the stunning Ligurian coast.

While walking isn't allowed in the port area, you can easily take the free shuttle bus to the port gates. From there, it's just a short 10-minute walk to the left to reach the historic centre, where you can explore the city's rich culture, lively streets, and picturesque piazzas.

## OUT AND ABOUT

**The Public Gardens:** These gardens are a tranquil green space perfect for a leisurely stroll or a relaxing afternoon. The gardens feature well-maintained paths, flower beds, and shaded areas, making it a great place to unwind.

**Castello San Giorgio:** An ancient protective fortress that flourished during the brief dominion of Nicolo Fieschi. Today it houses an architectural museum with pieces dating from prehistory through to the Middle Ages.

**The Cernaia Stairway:** One of the most characteristic of La Spezia's famed stairways, climbing up these stairs definitely comes with rewards. Think urban art deco landscapes, time-worn architectural gems and scaling views of the city below.

**Tahon di Revel Bridge:** This modern bridge stands in striking contrast to the pastel-hued historic buildings of the city. Walking across it provides stunning views, blending contemporary design with the beauty of the surrounding landscape.

## GETTING FURTHER AFIELD

La Spezia is our gateway to some of Italy's most acclaimed sights, Pisa being at the top of many peoples lists. Trains run fairly frequently from La Spezia Centrale Station and will take around 1 to 1.5 hours to reach Pisa Centrale . Please bear in mind that public transportation in Italy is subject to frequent strikes so plan your time accordingly.

## SHOPPING

Via del Prione is the oldest street in the heart of La Spezia, and today it stands as the city's bustling hub for shopping and strolling. The street is filled with a variety of bars, cafes, and chic boutiques, offering everything from fashion to artisanal products. It's also home to numerous eateries serving traditional Ligurian dishes, fresh seafood, and delicious gelato.

## DO IT LIKE THE LOCALS

Visit a local café, such as those on Via del Prione, and savour an espresso or cappuccino, just as the locals do to start their day. Be sure to try fresh seafood, like anchovies or squid, at one of the charming family-run seafood restaurants by the marina.

## JUST SO YOU KNOW

As with all tourist destinations, pick-pockets can operate in crowded areas so please be mindful of your possessions.

Siesta time in Italy is between 13.00-16.00, So you may notice some venues and shops may be closed.

**For more information on what to do ashore, speak to the Destination Services team on Deck 5**

